

[Material] Australia

82-83

TEXT: JAVIER ALASTUEY
PHOTO: DEREK SWALWELL

SANDY POINT HOUSE

Born to connect

The texture and depth in the space come in great measure from the use of warm wooden panels, slate tiles, and walls painted in a sage green hue.



I

In the coastal dunes of eastern Victoria, just three hours away from Melbourne, in the quiet town of Sandy Point, and honoring its name, this robust house is perched, designed both for weekends or long stays, in summer or winter, irrelevant fact when it comes to its feel.

Located at the north end of Wilsons Promontory National Park, facing Waratah Bay surf beach, and Shallow Inlet, mecca for water sports, Sandy Point is the perfect place to explore the area's natural attractions.

Born from a connection with the place, the Australian firm Kennedy Nolan, speaks through this house about the simplicity of a background and the links a place has, to be lived in and enjoyed.

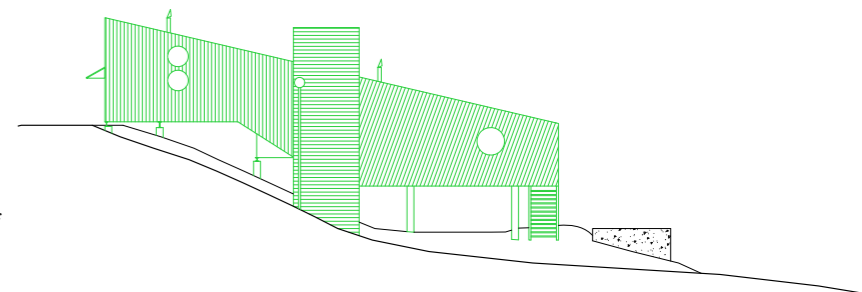
Its location is remote, with few people living in the surroundings, reason why security and low maintenance were key aspects. Known for its discretion, the town is located among land and humble roads, established along the coast, so the new construction had to be easily integrated to this community.

Wood is the protagonist, meeting every requirement in the area when it comes to wildfires, besides camouflaging it. The owners did not want a flashy house; instead, one that matched the existing community with modest houses and dirt roads. There is a union at the center of the house, of individuals, generations, and purposes, in which a series of passive, private, and active spaces are designed and organized together as part of a plan.

The place has evolved for generations, the link with the location, the nostalgia of the place, the expression of a home, and the tradition were essential from the first



The architectural firm means to get closer to the coastal town with this space through humility and sensitivity.



Location: Melbourne, Australia
Architects: Kennedy Nolan
Construction Team: Gene Laity Builders
Total Area: 315 m²

In its remote coastal environment, this house feels like a breath of fresh air, while being modest and capturing the spirit of a holiday home

The property has four separate areas connected through an open courtyard.



In its remote environment, this house feels like a breath of fresh air, while being modest and capturing the spirit of a holiday home



moment, in order to develop a proper design. Conceived in the shape of a pinwheel, it creates four separate areas around an open courtyard. This space is precisely what allows a true escape from coastal conditions and dominant winds. It is the heart of the property, since it is its main entrance, which can be accessed directly from almost every room and provides the only way to move between areas. The design promotes outdoor socialization and the movement from one area to the next offers a sensory experience.

Deep and intentionally embedded in the landscape, Sandy Point House is painted wood color and complemented by more refined details and elements, in a clearly refined palette, rich in color. The use of warm wooden panels, slate tiles, and walls painted in a sage green hue across the interior provides texture and depth to the space.

Each and every one of the spaces includes a curated area to sit quietly and read, rest, or meditate, where custom woodwork adapted to the space provides sitting places and gathering spaces. The architectural firm has created an occasional house where guests are welcomed by a warm experience. [C]