

# A laid-back state of mind

KENNEDY NOLAN



# Embedded in a landscape of sand dunes and scrubland, the kitchen and bathing spaces of this coastal Victorian home offer refuge and respite to a family during their much-loved beachside vacations.

Photography by Derek Swalwell

One of the owners of Sandy Point House has been holidaying in the beachside hamlet of Sandy Point all her life. She spent her family vacations there as a child, and continues to do so today with her husband and three teenage kids. Located on the edge of the quiet coastal community, Sandy Point House looks out across tea-tree scrubland and white dunes to Wilsons Promontory in the distance. "The underlying aspiration of the design was to imagine an idealized coastal experience and make a house that reflects and amplifies a genuine connection to place," says Patrick Kennedy, director of Kennedy Nolan Architects. "Deeply embedded in its landscape and derived from memories of family holidays past, it's somewhere new memories can be nurtured."

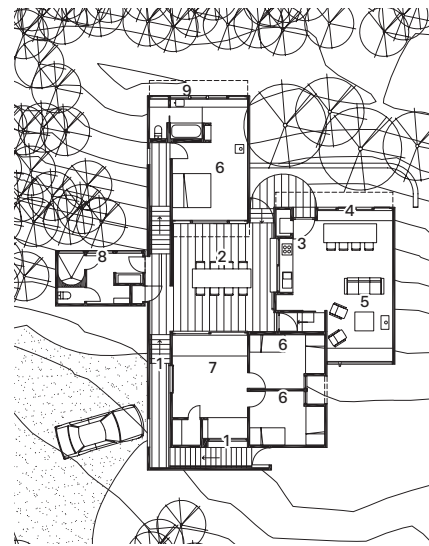
The house is arranged like a pinwheel, with bedrooms and living areas located around an inner courtyard. The courtyard provides an outdoor space that is sheltered from Sandy Point's famous prevailing winds and, as the means of circulation between rooms, it also connects these spaces with the rugged environment. "There is a sensory experience of place as you move from room to room; a view of stars, a burst of cold air, the sound of the ocean crashing," says Patrick.

With colour, texture and materiality inspired by the landscape, the house is at one with its setting. The greying timber exterior will become camouflaged among indigenous plantings, and the muted, natural colours in the interior are drawn from the surrounds. The intensity of colour and texture is subtly varied between rooms to influence the atmosphere and mood.

The kitchen is discreetly integrated into the dining and living area, with olive-green panelled joinery extending up the cabinetry and walls to meet the timber slats that roll across the undulating ceiling. This space looks out to the courtyard, with the kitchen window framed by the hardwood benchtop and recessed surround. Slate floor tiles and leather pulls harmonize with the colours and textures, inside and out.

The tonal green palette, timber ceiling and cocooning curves continue in the bathroom and ensuite. The shower wall in the shared bathroom is a curved alcove enveloped with tiles of varying shades of green, while the ceiling in the ensuite wraps down the wall to the vanity window, creating a sense of protection from the turbulent weather.

Designed for the informality of beach holidays and the family's traditions, Sandy Point House supports a shift in state of mind: from busy city life to relaxed and laid-back holiday mode. ©



Floor plan 1:400

0 5m

- 1 Entry
- 2 Courtyard
- 3 Kitchen
- 4 Dining
- 5 Living
- 6 Bedroom
- 7 Rumpus
- 8 Bathroom
- 9 Ensuite

01 A colour palette built around muted, natural tones found in the surrounding landscape is used throughout.

02 The varied volumes of the interior are unified by undulating and rolling timber ceilings.

03 In the ensuite, the ceiling wraps down to the vanity window, creating a sense of protection from the turbulent weather.





#### Kitchen products

**Internal walls:** Timber panels painted in Dulux 'Spores'

**Flooring:** Edwards Slate and Stone Sunset slate flooring with natural cement grout

**Joinery:** Panelled joinery painted in Dulux 'Spores'; 20-millimetre MDF cupboard fronts with V-joints; Made Measure Leather Loop pulls; stained Australian hardwood benchtop

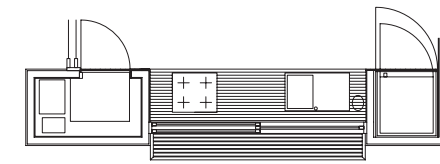
**Lighting:** Recessed downlights

**Sinks and tapware:** Franke Neptune Plus single bowl sink in stainless steel and Phoenix gooseneck sink mixer in 'Chrome' from Reece

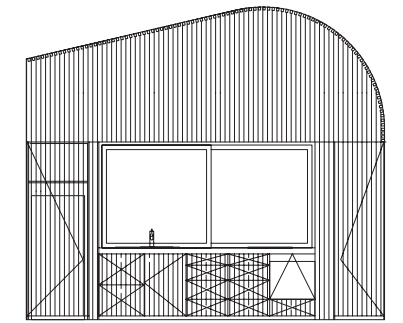
**Appliances:** Smeg built-in wall oven in stainless steel and induction cooktop; Fisher and Paykel integrated Single Dishdrawer dishwasher; Electrolux fridge/freezer

**Doors and windows:** Timber-framed stacking windows in silvertop ash

**Other:** Mark Tuckey dining table in wormy chestnut



Kitchen plan 1:100



Kitchen elevation 1:100



04 Slate floor tiles and leather pulls harmonize with the colours and textures, inside and out.

05 Discreetly integrated into the dining and living area, the kitchen looks out to the courtyard.



06

**Bathroom products**

**Internal walls:** Inax Yohen Border wall tile in 'YB102' and 'YB103' from Artedomus; timber panels painted in Dulux 'Spores'

**Flooring:** Inax Sugie Series Hanten floor tile in 'SU2031' from Artedomus

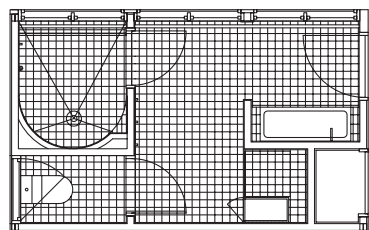
**Joinery:** Panelled joinery painted in Dulux 'Spores'; 20-millimetre MDF cupboard fronts with V-joints; In-Teria Curvy knob in Tasmanian oak

**Lighting:** Artemide Dioscuri wall light; IBL exterior surface-mounted can light from Light Project

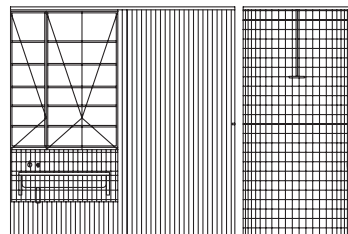
**Tapware and fittings:** Phoenix Vivid shower rose with ceiling arm, Mia sink mixer and Mia wall mixer in 'Chrome' from Reece

**Sanitaryware:** Rogerseller S-Line S20 counter inset basin; Reece Base Pressed Steel Bath in 'White'; Roca Meridian back-to-wall close coupled toilet suite from Reece

**Doors and windows:** Joey Cavity Frames semi-solid flush panel cavity sliding door with Designer Doorware Round flush pull; semi-solid flush panel hinged timber door with Handles Plus timber ball handle in teak; solid flush panel timber hinged door with Designer Doorware Club handle set



Bathroom plan 1:100 0 2m



Bathroom elevation 1:100

06 The colour of the muted green timber panelling appears to shift from room to room and with the hour of the day.

07 Warm hints of Australian blackbutt line the window frames, which draw in the natural light.



07



08

08 The shower wall in the shared bathroom is a curved alcove enveloped with tiles in shades of green.

**Architect**  
Kennedy Nolan  
+61 3 9415 8971  
[email@kennedynolan.com.au](mailto:email@kennedynolan.com.au)  
[kennedynolan.com.au](http://kennedynolan.com.au)

**Project team** Patrick Kennedy,  
Rachel Nolan, Matilda Blazey,  
Catherine Blamey, Adriana Hanna  
**Builder** Gene Laity Builders  
**Joinery** Davey Cabinets